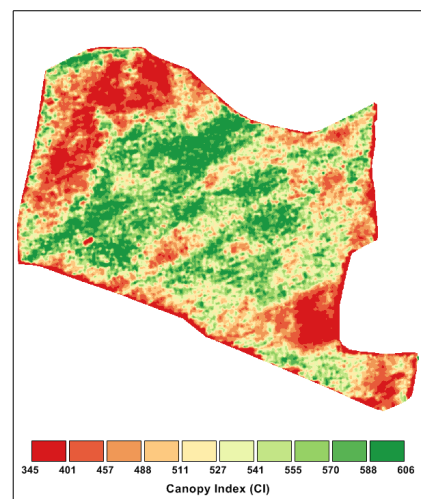
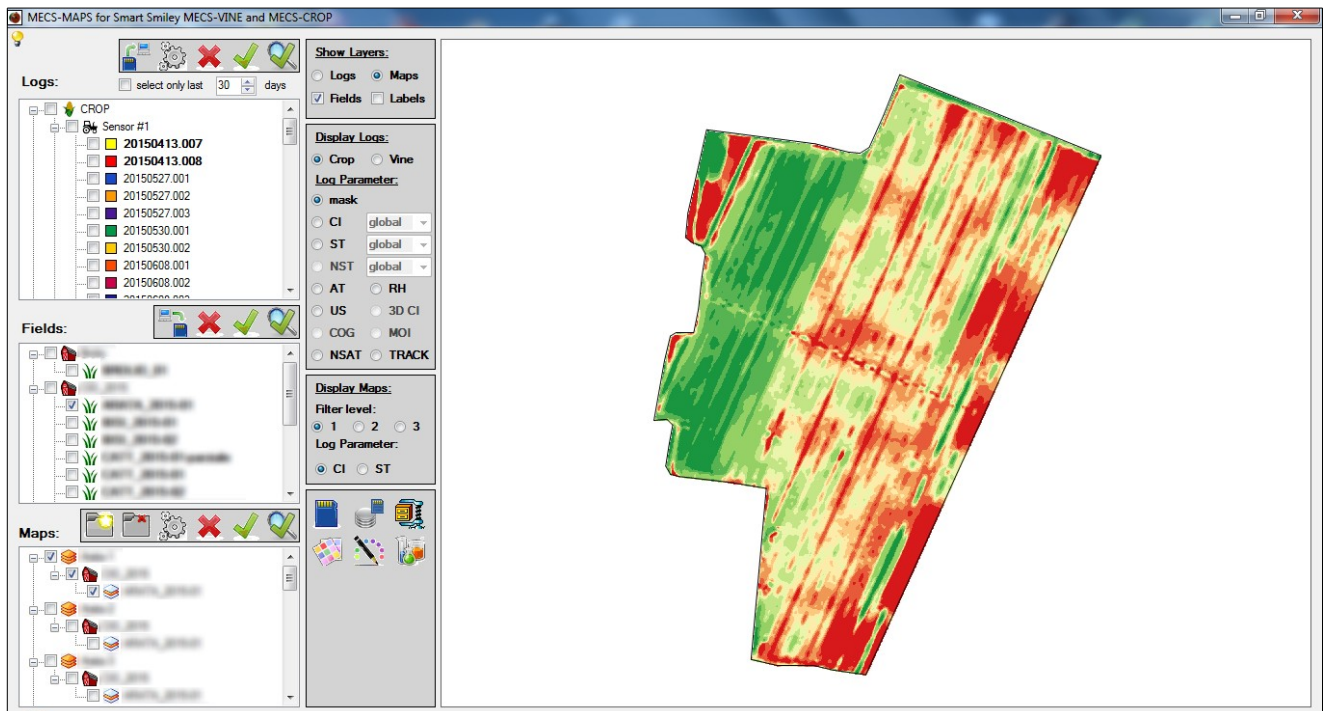


MECS-MAPS

The post-processing software, MECS-MAPS, turns the data collected by the MECS-VINE and MECS-CROP sensors, recorded in log files, into a sequence of levels of information that are made available as overlapping georeferenced maps. Thanks to MECS-MAPS, users can set up customised work programmes (in form of prescription maps) using the log files recorded by the sensor. These programmes will help them perform VRT (Variable Rate Technology) activities in the field by means of VRT-enabled agricultural machinery (fertiliser spreaders, manure/compost spreaders, sprayers, irrigators, pruning machines, leaf removal machines, harvesters, etc.).



For further information, please visit www.teamsmartfarming.com.